

VERNACULAR NARRATIVES

Square Consultancy Services, Kolkata

Tapping into the contextual realm of North Bengal, architectural firm Square Consultancy Service's design for Tropical Palimpsest expresses a natural aesthetic sensibility.

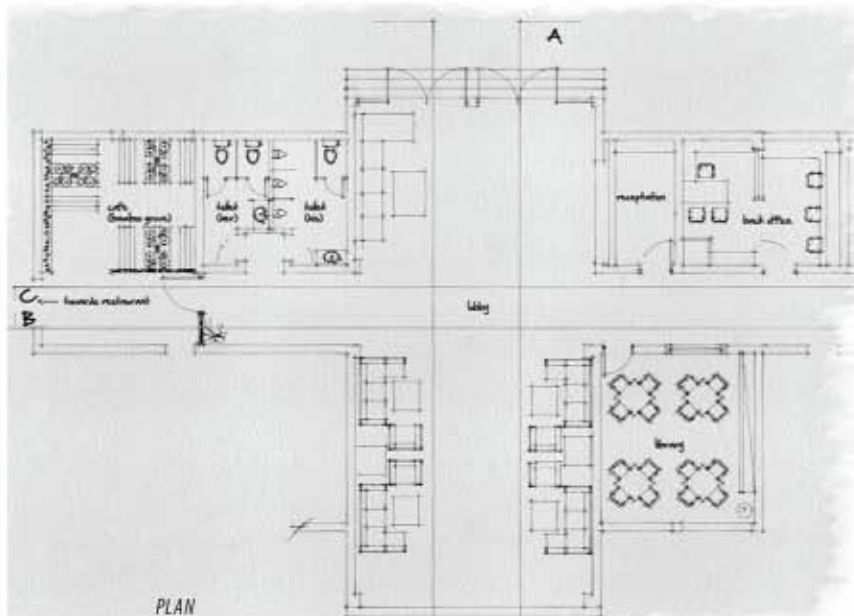
Text: Maanasi Hattangadi

Photographs: courtesy Square Consultancy Services

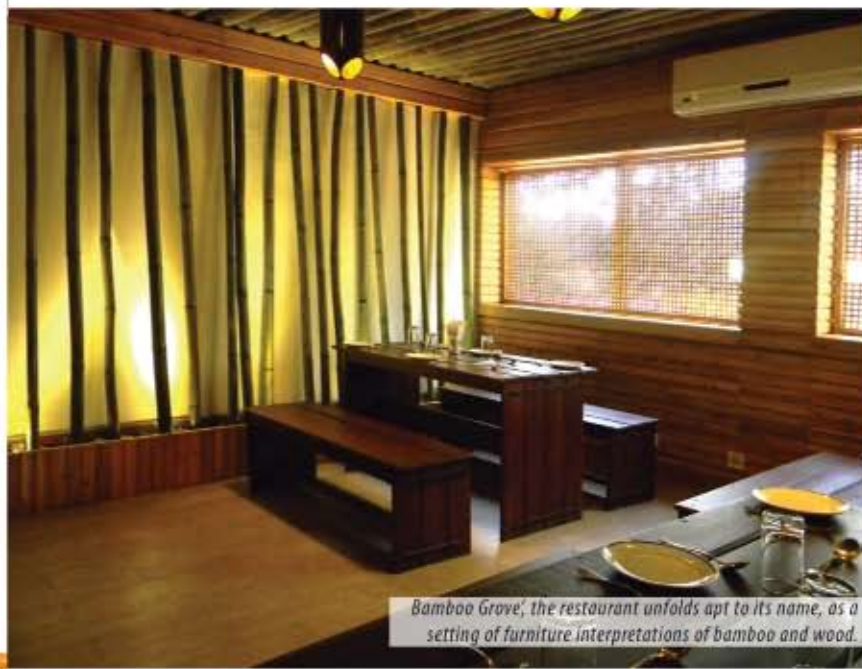
Started in October 2008 with a partnership of Kolkata-based architects Ranit Maiti and Subhrajit Gunakar Mitra, Square Consultancy Services has grown gradually over a period of time dealing with architectural consultancy, interior design, landscape and graphics.



The entrance lobby, composed of earthy furniture, exudes simplicity.



In a comparatively modest envelope, the design for Tropical Palimpsest exploits the panoramic vistas atop the Chlasa hill. Square Consultancy Services have woven the 4675sqft resort as a spatial and temporal dialectic that succinctly describes its independence from the conventional design in the hospitality sector. The concept was the clients brief as the generator of quality—a basis that warranted transformation of the original design's into a subtle and elegant play of shifting intersecting volumes suggestive of the local essence. The layout reflected on the inclusion of reception lobby, lounge, restaurant, common areas, and a triplet of suites housed in cottages. The entry faces a sweep of lush greenery of the hills, from wherein a double-heightened lounge beckons one forward. Large glazes invite the outdoors in and bamboo windows paint a rustic feel; the design intent is subtle but clear, of traditions in a contemporary insert. 'Bamboo Grove', the restaurant, flaunts contrast and character in form of a geometrical celebration of bamboo. The textural walls and wooded furniture exude simplicity to the ambience. The sensibility extends to the lobbies where handmade paintings enliven the experience. The language of the suites unfurls the vernacular architecture in three coded environments, 'Burra Sahib', 'Bandook

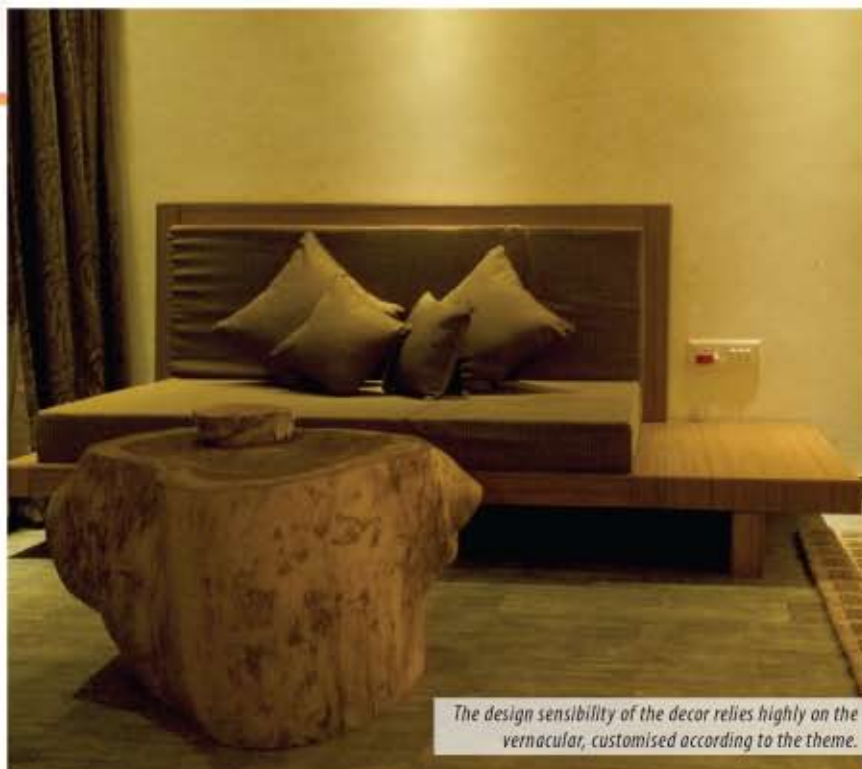
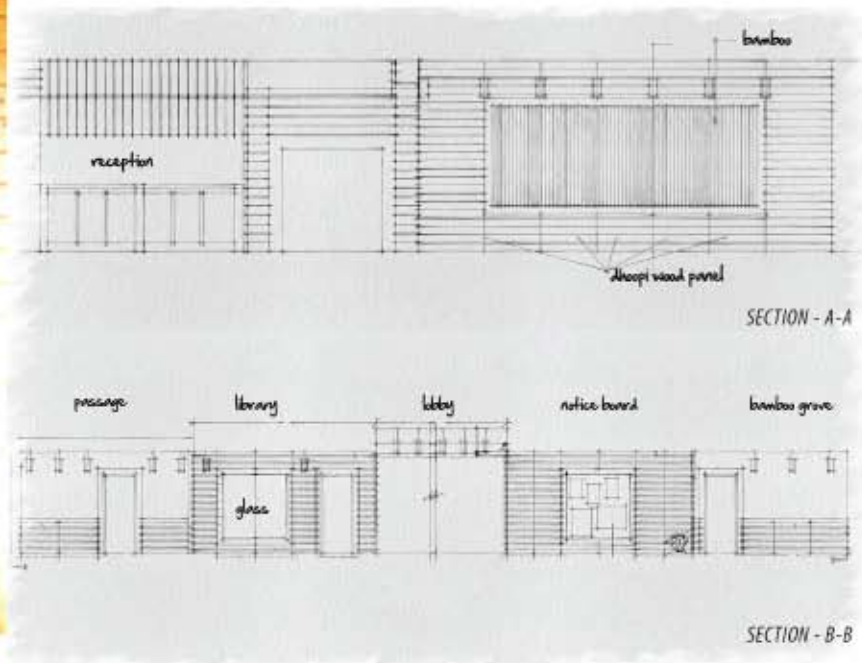


Bamboo Grove, the restaurant unfolds apt to its name, as a setting of furniture interpretations of bamboo and wood.



interiors

In contrast to their usual use, the lobbies in the resort liven up owing to the use of vibrant handmade paintings.



The design sensibility of the decor relies highly on the vernacular, customised according to the theme.



Each suite is a stylised expression of a theme- the three being 'Burra Sahib', 'Bandook Babu's Kothi' and 'Nouveau Ville'.

Babu's Kothi' and 'Nouveau Ville'. The decorum rhythm of each cottage follows a thematic dialogue—the 'Burra Sahib' recalls the colonial period style, the 'Bandook Babu's kothi' evolves as a hunters lodge and the 'Nouveau Ville' is a contemporary niche. The aesthetic order of the environment is stylised on local available materials like 'Dhoopi' wood, bamboo, sal, rattans, straw mats etc. A cultural orientation of materials and details, it sets the tone of implicit familiarity with the area. The classic analogy can be read both in a literal and visceral sense—a mix of luxury and ethnicity. It creates, through modest means, a narrative of relaxed delight. ■

FACT FILE:

Project	:	Hotel Sinclairs Retreat Doars
Location	:	Chalsa, Jalpaiguri, West Bengal
Architect	:	Square Consultancy Services